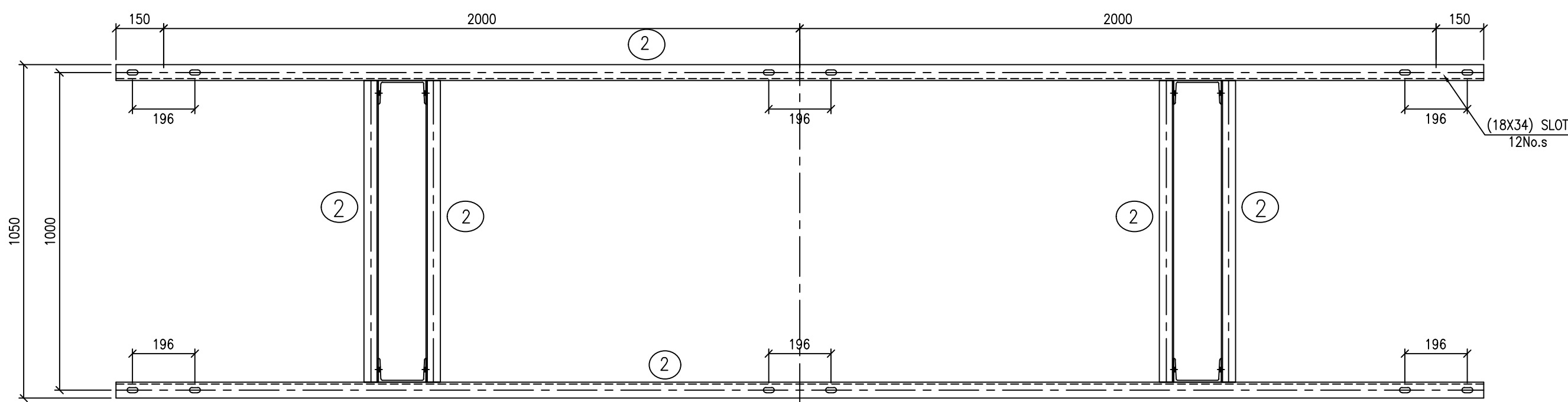
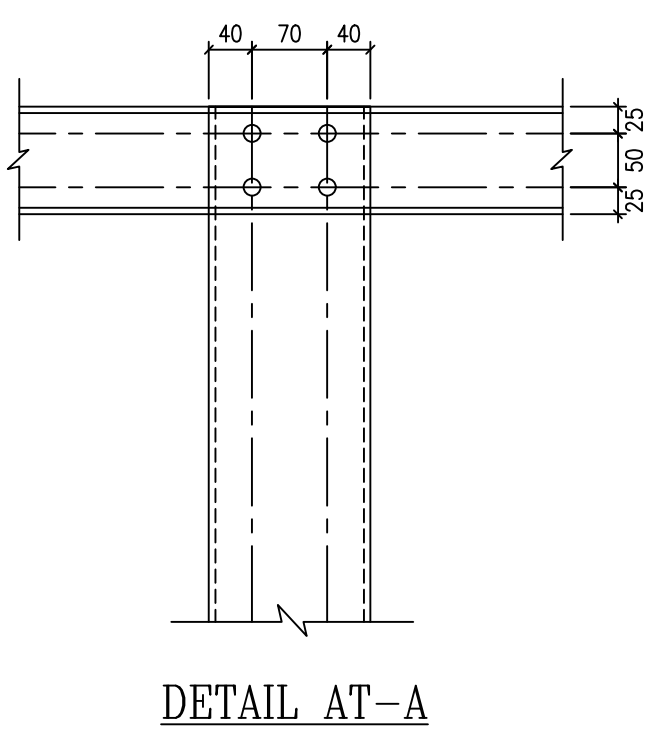


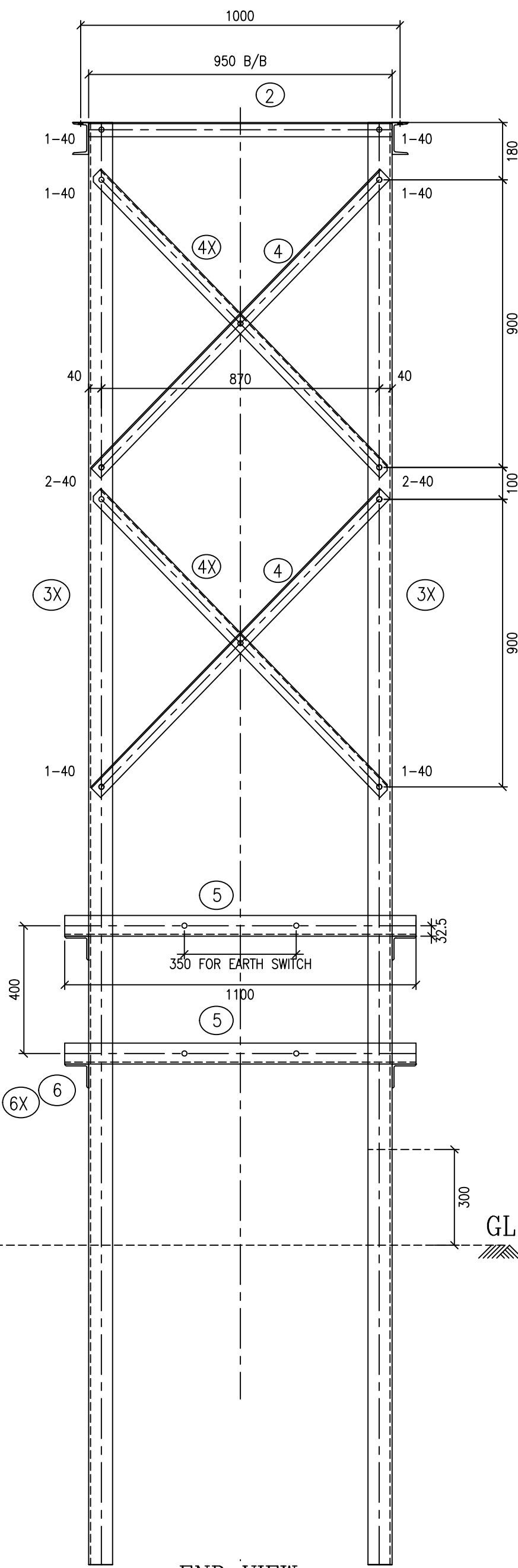
ELEVATION



PLAN



DETAIL AT-A



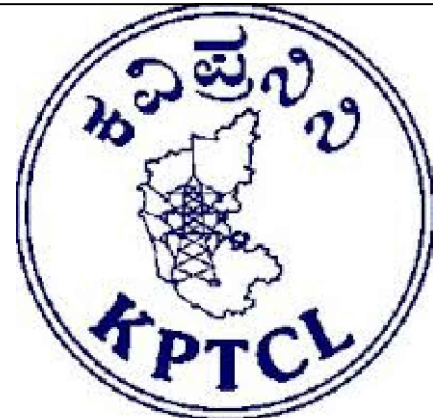
END VIEW

BILL OF MATERIAL				
ITEM NO.	SECTION DESCRIPTION	PIECE.WT	QTY	TOT WT
7ISO-1	ISMC-100X50-4300 mm	41.11	2	82.22
7ISO-2	ISA-45X45X5-950 mm	3.23	4	12.92
7ISO-3/3X	ISMC-150X75-4515 mm	75.85	2+2	303.40
7ISO-4/4X	ISA-45X45X5-1302 mm	4.43	16	70.88
7ISO-5	ISA-65X65X6-1100 mm	6.38	2	12.76
7ISO-6, 6X	ISA-75X75X6-735 mm	5.0	2+2	20.0
WEIGHT OF STRUCTURE (IN KG)				502.18
7ISO-5X	ISA-65X65X6-1100 mm	6.38	2	12.76
7ISO-7, 7X	ISA-75X75X6-300 mm	2.04	2+2	8.16
WEIGHT OF EARTH SWITCH (IN KG)				20.92

LIST OF BOLTS & NUTS		
DESCRIPTION OF BOLT	QTY	W.T
BOLT M16X40 mm LG	48	6.14
3.5 TH.SP.WASHER FOR 16Ø BOLT	48	0.53
TOTAL WEIGHT OF NUT & BOLTS		6.67

NOTES:
1. ALL DIMENSIONS ARE IN MM.
2. ALL HOLES ARE 17.5MM DIA. FOR 16MM DIA. BOLTS.
3. ALL STEEL SECTIONS SHALL CONFIRM TO IS: 2062.
4. ALL STEEL SECTIONS, BOLTS, NUTS & PACK WASHERS ARE TO BE HOT DIP GALVANIZED.
5. ALL BOLTS SHALL CONFORM TO IS:12427(2001), WITH MECHANICAL PROPERTIES CLASS 5.6 AND NUTS SHALL CONFORM TO IS: 1367(PART-VI) OF PROPERTIES CLASS-5.
7. DIMENSIONAL AND WEIGHT TOLERANCE ±10%.
8. THE HEIGHT OF STRUCTURE SHALL BE ADJUSTED TO MATCH WITH LIVE POINT HEIGHT (LPH) AS PER APPROVED SECTIONAL DRAWING.
9. THE EQUIPMENT MOUNTING DETAILS SHALL BE MATCHED WITH APPROVED EQUIPMENT DRAWINGS.

EQUIPMENT MOUNTING STRUCTURE FOR
66KV ISOLATOR (LPH = 4600mm)
(FOR 66/11KV SUBSTATIONS ONLY)



KPTCL/P&C/TECH/66KV/ISO(4.6)	AEE	EE	SEE	CEE
	DRAWING NO.	DRAWN/CHECKED	SUBMITTED	RECEIVED
				APPROVED

Approval Ltr No.: CEE/P&C/SET/EE(TL)/AEE-9/2021-22/10039-49 Dtd:05.10.2021